

We're a social enterprise supporting people with learning difficulties and autism into jobs with a future

For every £1 invested in NOW Group we generated

£20
in social value



IMPACT CARD 2021 - 2022
www.nowgroup.org



We offer a range of solutions to businesses including corporate catering, recruitment and supported employment, social impact measurement and disability awareness customer service training.
Get in touch to find out more

Tel: 028 9043 6400
www.nowgroup.org
Twitter: @NOW_Group
Facebook: nowgrouporg

Like our Impact Card?
www.gaugeimpact.org can work with you to produce one for your business

Data and impact measurement by: www.gaugeimpact.org©
Design by: ww.gerry-can.com©



This project is part funded through the Northern Ireland European Social Fund Programme 2014 – 2020 the Department for the Economy and the Department for Communities.

"NOW Group has totally changed my life, during Covid I suffered bad mental depression and couldn't see any future for me. Now I'm in NOW Group I have completed a few online courses to help me with how to do interviews and get work. I have taken part in the catering at Loaf, now I'm volunteering on a Thursday."

Participant

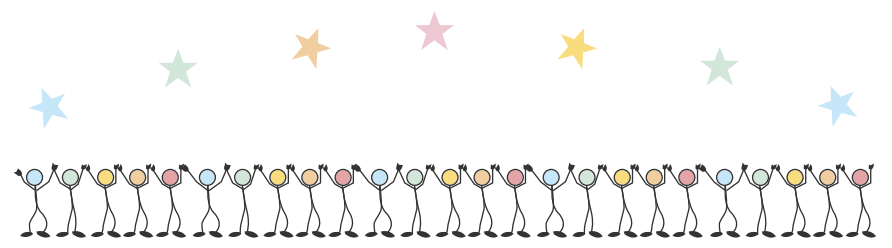
"We are delighted to be involved with NOW Group Digital Partnership and are able to offer our participant a full-time post upon completion of the programme. He adds value to our organisation, and we anticipate that he will continue to grow and develop as we move forward together."

Employer

"It really is a fantastic venue, as the young adults feel safe & supported, you can see how they have all bonded & have a great time together. They get opportunities there to learn many things. We now have a bit more time to look after ourselves and we are now much stronger as a family. I can't think of any other plaudits to add but to offer our eternal thanks to NOW Group staff."

Parent

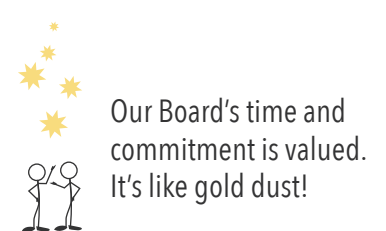
We would like to say thank you to our staff, volunteers & board members for all their efforts



Our team reaches for the stars to create meaningful impact for our participants.



Our volunteers are out of this world!



Our Board's time and commitment is valued. It's like gold dust!

